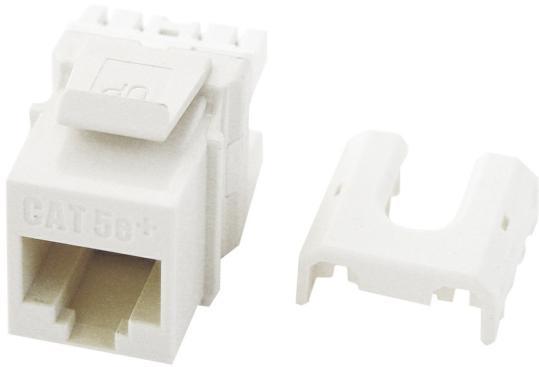




On-Q
Cat 5e Quick Connect RJ45 Keystone Insert, White, 10-Pack
Part No. WP3475WH10



Quick Connect RJ45 Cat 5e T568 A/B Keystone Insert

Features & Benefits

ETL Verified to Category 5e component standard: Ensures standards compliance

RJ45 Inserts can be terminated with any 110 punchdown tool

Exceeds EIA/TIA 568A/B Cat 5e Performance Specifications

Available in Black, Brown, White, Light Almond, Grey, Blue, Orange, Ivory and Red

Contractor packs available in quantities of 50. To order, use part number WP3475-LA-50

Specifications

General Info

| | | | |
|--------------------|--------------------------|-------------------|---|
| Product Line | On-Q | Color | White |
| UPC Number | 804428058700 | Country Of Origin | Taiwan, Province Of China |
| Features | Quick Connect Compatible | Package Quantity | 10 |
| Application Sector | Residential | Standard | UL (UL/ANSI 1863), CSA (CAN/CSA-C22.2 No. 182.4-1990), IEEE 802.3an 10GBase-T, TIA 568-B.2-10, RoHS |

Technical Information

| | | | |
|--------------------------|--|------------|--------|
| Termination Style | Punchdown | Cable Type | Cat 5e |
| Environmental Conditions | 0 to 93% (relative humidity, non-condensing) | | |