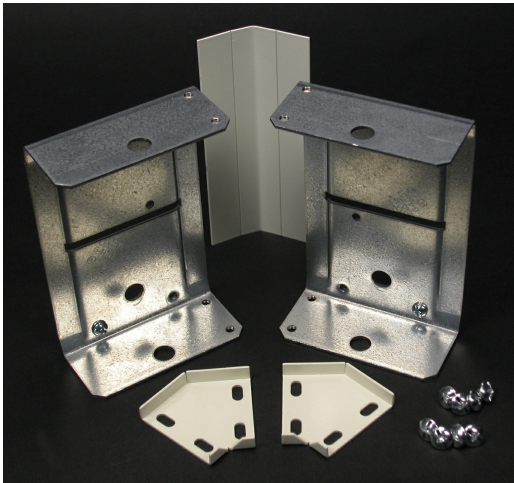




Wiremold
4000 Internal or External 45 Degree Elbow Fitting
Part No. V4012TX



Internal or external 45 degree turns in a run of 4000 Series Raceway. Can also be assembled as an inverted 45 degree elbow.

Features & Benefits

Internal or external 45 degree turns in a run of 4000 Series Raceway. Can also be assembled as an inverted 45 degree elbow.

Specifications

General Info

Product Line	Wiremold	UPC Number	786776080537
Country Of Origin	United States	Application Sector	Residential/Commercial
Standard	cULus Listed Raceway: File E4376 Guide RJBT. Fittings: File E41751 Guide RJPR. Base & Blank Cover: Meets Article 386 of NEC. Meets Section 12-600 of CEC.	Type	Raceway

Dimensions

Product Depth US	1.5 in
------------------	--------

Listing Agencies / 3rd Party Agencies

cULus ListingNumber	E41751	cULus Listed	Yes
---------------------	--------	--------------	-----

Buy American Act Compliance

NAFTA	Yes
-------	-----

Additional Information

RoHS Conformant Yes

Product Environmental Profile Yes

Technical Information

Voltage 600.0 V
