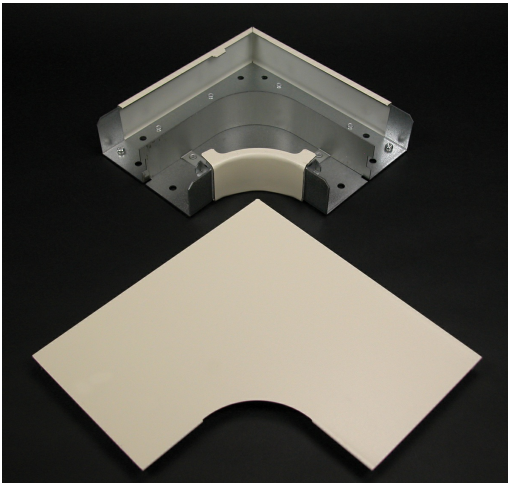




Wiremold
Wiremold 4000 Series Radiused Full Capacity Flat Elbow Fitting, Ivory
Part No. V4011FO



The Wiremold 4000 Series Raceway is the workhorse of surface cable raceway systems. The multiple channel cable raceway can be divided for multi-service applications and is ideal for all applications requiring a large cable capacity dual service steel raceway. Commercial, institutional and industrial applications all benefit from the Wiremold 4000 Series rigid steel construction and durable Ivory ScuffCoat finish. The Wiremold 4000 Series Raceway is also ideal for municipalities that require either all steel construction or prohibit nonmetallic cable management systems.

Features & Benefits

The Wiremold 4000 Series Raceway is the workhorse of surface cable raceway systems. The multiple channel cable raceway can be divided for multi-service applications and is ideal for all applications requiring a large cable capacity dual service steel raceway. Commercial, institutional and industrial applications all benefit from the Wiremold 4000 Series rigid steel construction and durable Ivory ScuffCoat finish. The Wiremold 4000 Series Raceway is also ideal for municipalities that require either all steel construction or prohibit nonmetallic cable management systems.

Specifications

General Info

Product Line	Wiremold	Color	Ivory
UPC Number	786776537024	Country Of Origin	United States
Application Sector	Commercial	Standard	cULus Listed Surface Metal Raceway: File E41751: Guide RJPR/RJPR7
Type	Raceway		

Dimensions

Product Width US	8.75 in	Product Weight US	2.6 lb
Product Volume US	95.7 cu in	Product Depth US	1.25 in
Product Height US	8.75 in		

Listing Agencies / 3rd Party Agencies

cULus ListingNumber	E41751	cULus Listed	Yes
---------------------	--------	--------------	-----

Buy American Act Compliance

NAFTA	Yes
-------	-----

Additional Information

RoHS Conformant	Yes	Product Environmental Profile	Yes
-----------------	-----	-------------------------------	-----

Technical Information

Voltage	600.0 V
---------	---------
