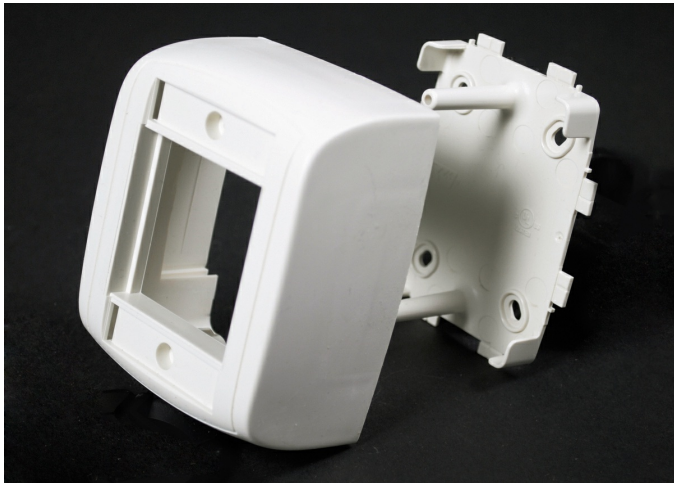




Wiremold
Eclipse PN03, PN05, PN10 Bezel Box Fitting
Part No. PBB2S2WH



Surface mount box for use with Eclipse Raceway or standalone application. Accepts two front-loaded downward facing Ortronics Series II inserts.

Features & Benefits

Surface mount box for use with Eclipse Raceway or standalone application. Accepts two front-loaded downward facing Ortronics Series II inserts.

Specifications

General Info

Product Line	Wiremold	UPC Number	786776024494
Country Of Origin	United States	Application Sector	Residential/Commercial
Standard	cULus Listed Raceway: File E90378 Guide RJTX. Complies with flammability requirements of UL-5A. Fittings: File E90377 Guide RJYT. Meets Article 388 of NEC. UL Listed for up to 600V. Meets Section 12-2600 of CEC.	Type	Raceway

Listing Agencies / 3rd Party Agencies

cULus ListingNumber	E90377	cULus Listed	Yes
---------------------	--------	--------------	-----

Buy American Act Compliance

NAFTA	Yes
-------	-----

Additional Information

RoHS Conformant

Yes

Product Environmental Profile

Yes

Technical Information

Voltage

600.0 V