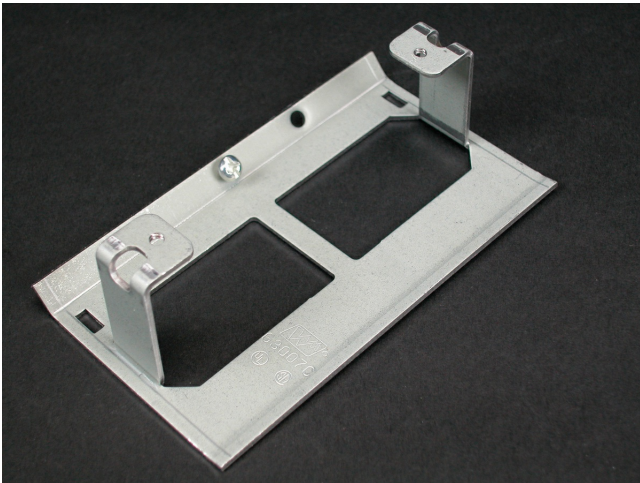




Wiremold  
3000 Device Bracket Fitting  
Part No. G3007C



Mounts standard after-market devices into 3000 Series Raceway. Accepts single-gang devices with 3.281" (95mm) mounting centers. Use with commercially available flush plates (not furnished).

## Features & Benefits

Mounts standard after-market devices into 3000 Series Raceway. Accepts single-gang devices with 3.281" (95mm) mounting centers. Use with commercially available flush plates (not furnished).

## Specifications

### General Info

|                   |   |                    |              |
|-------------------|---|--------------------|--------------|
| Product Line      | Wiremold  | UPC Number         | 786776085358 |
| Country Of Origin | United States   | Application Sector | Commercial   |
| Standard          | cULus Listed Raceway:File E4376 Guide RJBT.<br>Fittings: File E41751 Guide RJPR. Base & Blank<br>Cover: Meets Article 386 of NEC. Meets Section<br>12-600 of CEC. | Type               | Raceway      |

### Dimensions

Product Length US 4.5 in

### Buy American Act Compliance

NAFTA Yes

### Additional Information

RoHS Conformant Yes Product Environmental Profile Yes

---

## Technical Information

---

Voltage 600.0 V

---