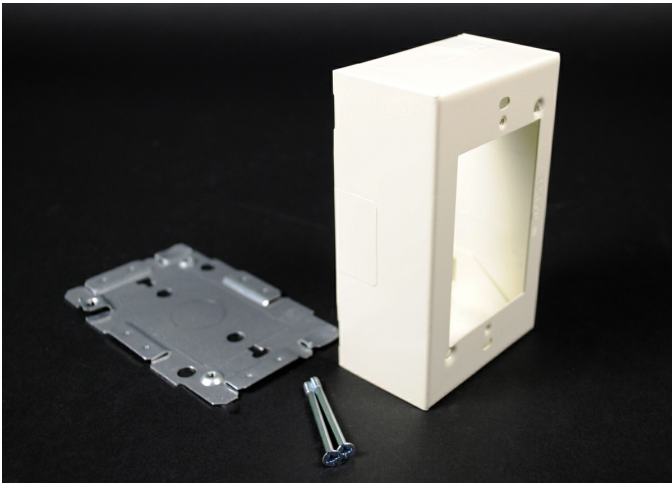




Wiremold  
2000 Single-Gang Device Box Fitting  
Part No. G2048



Single Gang Device Box. Cover has twistouts for 2000, 500 and 700 Series Raceways. Base has 1/2" trade size KO and rectangular KO for extension to wall box. Base has #10 threaded hole for ground connection.

## Features & Benefits

Single Gang Device Box. Cover has twistouts for 2000, 500 and 700 Series Raceways. Base has 1/2" trade size KO and rectangular KO for extension to wall box. Base has #10 threaded hole for ground connection.

## Specifications

### General Info

Product Line	Wiremold	Replaced by Part Number	CG2048
UPC Number	786776037456	Country Of Origin	United States

Application Sector	Commercial	Standard	cULus Listed Base & Blank Cover: File E4376 Guide RJBT. Multioutlet Assemblies: File E15191 Guide PVGT. Fittings: File E41751 Guide RJPR. Base & Blank Cover & Plugmold Series w/Snapicoil Haarness: Meets Article 386 of NEC. Meets Section 12-3032 of CEC. cULus Listed Raceway: File E4376 Guide RJBT. Fittings: File E41751 Guide RJPR. Base & Black Cover: Meets Article 386 of NEC. Meets Section 12-600 of CEC.

Type	Plugmold
------	----------

Dimensions

Product Width US	2.875 in	Product Depth US	1.75 in
Product Length US	2.875 in		

Buy American Act Compliance

NAFTA	Yes
-------	-----

Additional Information

RoHS Conformant	Yes	Product Environmental Profile	Yes
-----------------	-----	-------------------------------	-----

Technical Information

Amperage	15 A	Enclosure Type	Steel
Voltage	125.0 V	Environmental Conditions	Dry interior locations