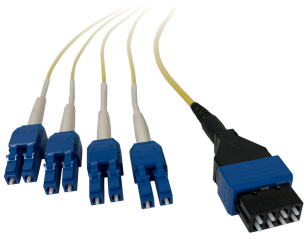




Ortronics  
10 Feet (10 ft), 4 Duplex LC/UPC To acclAIM/UPC, 9/125 OS2 Single-Mode, ONFP Plenum, 8 Fiber, Distribution Harness Cable, Yellow  
Part No. C80AM137S5JEM0010F



The 4 Duplex LC to acclAIM, 8 Fiber, Distribution Harness Cable, is designed to interface acclAIM adapter panels and breakout to individual Duplex LC connectors to interface active equipment or other patch panels within Network Racks, or in top of rack configurations. The acclAIM breakout cable is also a great solution for Telco Rooms, Meet Me Rooms, IDFs, Carrier rooms, Demarcations, and more as a cost-effective less time-consuming alternative to field termination.

## Features & Benefits

Part of an acclAIM Connectivity Solution: Typical total channel loss of 0.4 dB

Bend-insensitive fiber for optimal cable management and ease of installation

TIA Channel Compliant

Dust caps pre-installed

## Specifications

### General Info

|                   |               |       |        |
|-------------------|---------------|-------|--------|
| Product Line      | Ortronics     | Color | Yellow |
| Country Of Origin | United States |       |        |

### Dimensions

|                   |         |                   |         |
|-------------------|---------|-------------------|---------|
| Product Weight US | 0.12 lb | Product Length US | 10.0 FT |
|-------------------|---------|-------------------|---------|

### Technical Information

|                        |                   |                         |              |
|------------------------|-------------------|-------------------------|--------------|
| Fiber Optic Cable Type | OS2               | Jacket Application      | Plenum Rated |
| Minimum Insertion Loss | 55 dB             | Number of Fanout Cables | 4            |
| Jacket Rating          | Plenum OFNP-Rated | Fanout Cable Diameter   | 2 mm         |
| Connector Type         | Infinium acclAIM  | Fanout Cable Length     | 24 in        |
| Wavelength             | 1310 nm, 1550 nm  | Operating Temperature   | 32°-158°F    |
| Fiber Size             | 9/125             | Maximum Insertion Loss  | 0.3 dB       |
| Storage Temperature    | -40° - 158° F     |                         |              |