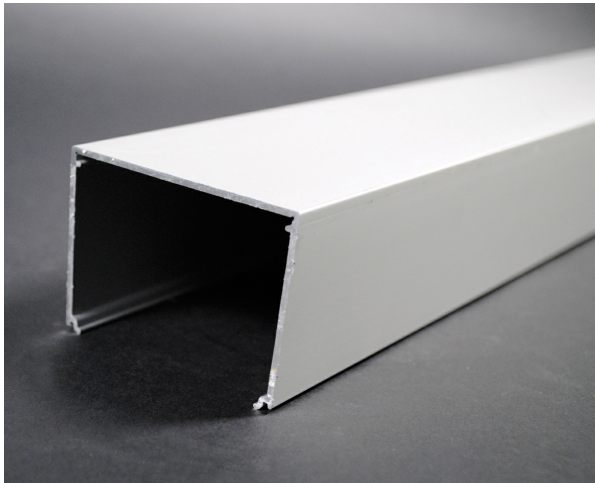




Wiremold
Discontinued - ALA3800 Single Compartment Raceway Base
Part No. ALA3800B-10US



Satin Anodized finish. Nominal wall thickness of .078" (1.99mm).
Packed four 10' (3m) lengths per carton. Made in US.

Features & Benefits

This product meets the material restrictions of RoHS

Specifications

General Info

Product Line	Wiremold	Replaced by Part Number	ALA3800B-10
UPC Number	786776189988	Country Of Origin	United States
Application Sector	Commercial	Standard	cULus Listed Raceway: File E4376 Guide RJBT. Fittings: File E41751 Guide RJPR. Raceway & Fittings: Meets Article 386 of NEC. Multioutlet Assemblies: Meets Article 380 of NEC.
Type	Raceway		

Listing Agencies / 3rd Party Agencies

cULus ListingNumber	E4376	cULus Listed	Yes
---------------------	-------	--------------	-----

Buy American Act Compliance

NAFTA	Yes
-------	-----

Additional Information

RoHS Conformant	Yes	Product Environmental Profile	Yes
-----------------	-----	-------------------------------	-----

Technical Information

Voltage	600.0 V
---------	---------
