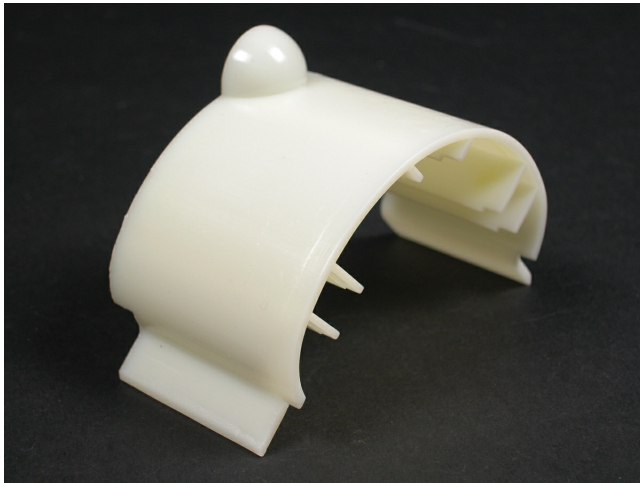




Wiremold
ALA4800 Radiused Insert Fitting
Part No. ALA11RI



A radiused insert for the ALA3811 and ALA4811 flat elbow to provide a bend radius of 2" (51mm) for Fiber Optic/Category 5e installations. The insert is ideal for new and retrofit applications whether the cable installation is lay-in or pull-through.

Features & Benefits

A radiused insert for the ALA3811 and ALA4811 flat elbow to provide a bend radius of 2" (51mm) for Fiber Optic/Category 5e installations. The insert is ideal for new and retrofit applications whether the cable installation is lay-in or pull-through.

Specifications

General Info

Product Line	Wiremold	UPC Number	786776541533
Country Of Origin	United States	Application Sector	Commercial
Standard	cULus Listed Raceway: File E4376 Guide RJBT. Fittings: File E41751 Guide RJPR. Raceway & Fittings: Meets Article 386 of NEC. Multioutlet Assemblies: Meets Article 380 of NEC.	Type	Raceway

Listing Agencies / 3rd Party Agencies

cULus ListingNumber	E41751	cULus Listed	Yes
---------------------	--------	--------------	-----

Buy American Act Compliance

NAFTA	Yes
-------	-----

Additional Information

RoHS Conformant	Yes	Product Environmental Profile	Yes
-----------------	-----	-------------------------------	-----

Technical Information

Voltage	600.0 V
---------	---------
