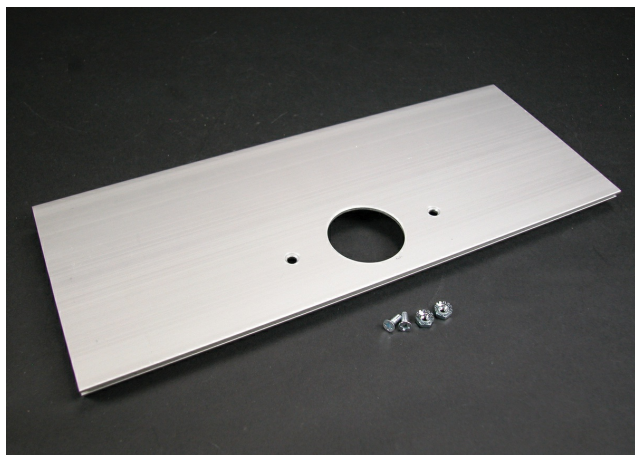




Wiremold  
AL5200 Large Multi-Channel Raceway Single Receptacle Device Cover Plate  
Part No. AL5246-F



Installs commercially available straight blade and locking single receptacles with face diameters of 1.56"-1.58" (39.2mm-39.3mm).

## Features & Benefits

Installs commercially available straight blade and locking single receptacles with face diameters of 1.56"-1.58" (39.2mm-39.3mm).

## Specifications

### General Info

Product Line	Wiremold	UPC Number	786776046977
Country Of Origin	Mexico	Application Sector	Commercial
Standard	cULus Listed Raceway: File E4376 Guide RJPR. Fittings: File E41751 Guide RJPR. Raceway & Fittings: Meet Article 386 of NEC. Multioutlet Assemblies: Meet Article 380 of NEC.	Type	Raceway

### Dimensions

Product Width US	4.875 in	Product Length US	12.0 in
------------------	----------	-------------------	---------

### Listing Agencies / 3rd Party Agencies

cULus ListingNumber	E41751	cULus Listed	Yes
---------------------	--------	--------------	-----

### Buy American Act Compliance

NAFTA	Yes
-------	-----

### Additional Information

RoHS Conformant	Yes	Product Environmental Profile	Yes
-----------------	-----	-------------------------------	-----

---

Technical Information

---

Voltage	600.0 V
---------	---------

---