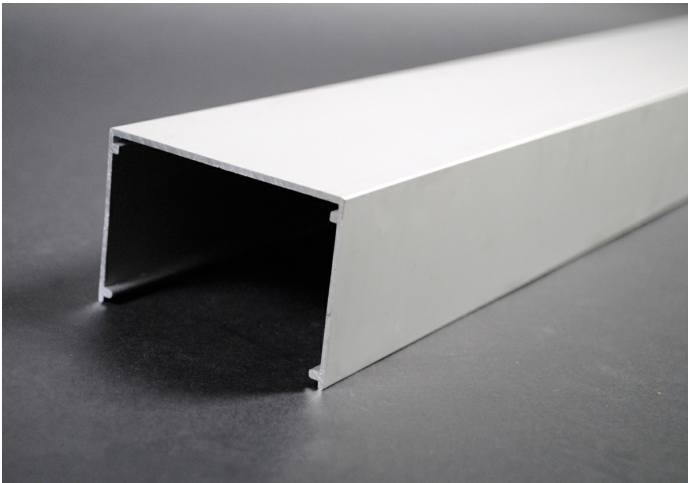




Wiremold
Discontinued - AL3300 Raceway Base
Part No. AL3300B10US



6063-T5 extruded aluminum, satin anodized finish. Nominal wall thickness .060" (1.5mm). Packed four 10'(3m) lengths per carton. Made in U.S.A.

Features & Benefits

This product meets the material restrictions of RoHS

Specifications

General Info

| | | | |
|--------------|--------------|-------------------------|---------------------------------|
| Product Line | Wiremold | Replaced by Part Number | AL3300B10, AL3300B10, AL3300B10 |
| UPC Number | 786776189902 | Country Of Origin | United States |

| | | | |
|--------------------|------------|----------|--|
| Application Sector | Commercial | Standard | cULus Listed Raceway: File E4376 Guide RJPR. Fittings: File E41751 Guide RJPR. Raceway & Fittings: Meet Article 386 of NEC. Multioutlet Assemblies: Meet Article 380 of NEC. |
|--------------------|------------|----------|--|

| | |
|------|---------|
| Type | Raceway |
|------|---------|

Listing Agencies / 3rd Party Agencies

| | | | |
|---------------------|-------|--------------|-----|
| cULus ListingNumber | E4376 | cULus Listed | Yes |
|---------------------|-------|--------------|-----|

Buy American Act Compliance

| | |
|-------|-----|
| NAFTA | Yes |
|-------|-----|

Additional Information

RoHS Conformant

Yes

Product Environmental Profile Yes

Technical Information

Voltage

600.0 V
