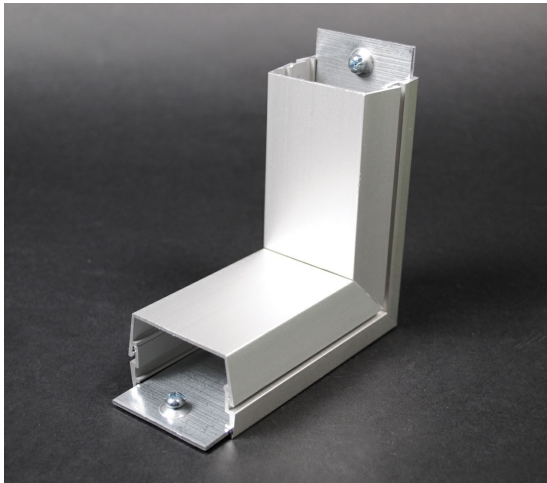




Wiremold  
AL2400 Internal Elbow  
Part No. AL2417



Makes 90 degree internal corners. Two AL2401 Couplings included.

## Features & Benefits

Makes 90 degree internal corners. Two AL2401 Couplings included.

## Specifications

### General Info

|                   |   |                    |              |
|-------------------|---|--------------------|--------------|
| Product Line      | Wiremold  | UPC Number         | 786776044485 |
| Country Of Origin | Mexico  | Application Sector | Commercial   |
| Standard          | cULus Listed Raceway: File E4376 Guide<br>RJPR. Fittings: File E41751 Guide RJPR.<br>Raceway & Fittings: Meet Article 386 of NEC.<br>Multioutlet Assemblies: Meet Article 380 of NEC. | Type               | Plugmold     |

### Listing Agencies / 3rd Party Agencies

|                     |        |              |     |
|---------------------|--------|--------------|-----|
| cULus ListingNumber | E41751 | cULus Listed | Yes |
|---------------------|--------|--------------|-----|

### Buy American Act Compliance

|       |     |
|-------|-----|
| NAFTA | Yes |
|-------|-----|

### Additional Information

|                 |     |                               |     |
|-----------------|-----|-------------------------------|-----|
| RoHS Conformant | Yes | Product Environmental Profile | Yes |
|-----------------|-----|-------------------------------|-----|

---

Technical Information

|          |         |                          |                        |
|----------|---------|--------------------------|------------------------|
| Amperage | 15 A    | Enclosure Type           | Aluminum               |
| Voltage  | 125.0 V | Environmental Conditions | Dry interior locations |

---