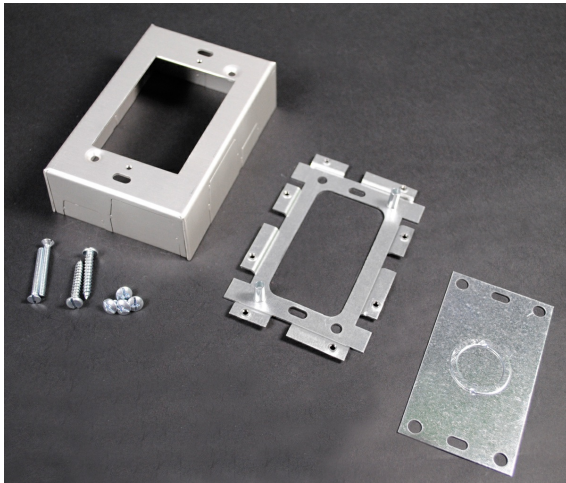




Wiremold
AL2000 Shallow Switch and Receptacle Box
Part No. AL2047



Single Gang Shallow Device Box. Designed for standard shallow switches and receptacles. Base has open back plate for mounting to existing wall box and solid black plate insert with 1/2" and 3/4" trade size Kos to close opening.

Features & Benefits

Single Gang Shallow Device Box. Designed for standard shallow switches and receptacles. Base has open back plate for mounting to existing wall box and solid black plate insert with 1/2" and 3/4" trade size Kos to close opening.

Specifications

General Info

| | | | |
|-------------------|---------------|--------------------|--------------|
| Product Line | Wiremold | UPC Number | 786776039009 |
| Country Of Origin | United States | Application Sector | Commercial |

| | | | |
|----------|--|------|----------|
| Standard | cULus Listed Raceway: File E4376 Guide RJPR. Fittings: File E41751 Guide RJPR. Raceway & Fittings: Meet Article 386 of NEC. Multioutlet Assemblies: Meet Article 380 of NEC. cULus Listed Raceway: File E4376 Guide RJBT. Multioutlet Assemblies: File E15191 Guide PVGT. Fittings: File E41751 Guide RJPR. Base & Blank Cover: Meets Article 386 of NEC. Plugmold Strips: Meets Article 380 of NEC. | Type | Plugmold |
|----------|--|------|----------|

Dimensions

| | | | |
|-------------------|----------|------------------|----------|
| Product Width US | 3.063 in | Product Depth US | 1.375 in |
| Product Length US | 3.063 in | | |

Listing Agencies / 3rd Party Agencies

| | | | |
|---------------------|--------|--------------|-----|
| cULus ListingNumber | E41751 | cULus Listed | Yes |
|---------------------|--------|--------------|-----|

Buy American Act Compliance

| | |
|-------|-----|
| NAFTA | Yes |
|-------|-----|

Additional Information

| | | | |
|-----------------|-----|-------------------------------|-----|
| RoHS Conformant | Yes | Product Environmental Profile | Yes |
|-----------------|-----|-------------------------------|-----|

Technical Information

| | | | |
|----------|---------|--------------------------|------------------------|
| Amperage | 15 A | Enclosure Type | Aluminum |
| Voltage | 120.0 V | Environmental Conditions | Dry interior locations |