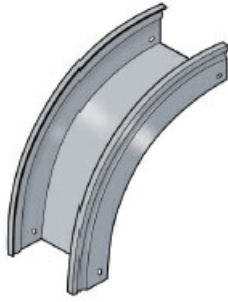




Cablofil  
**TROUGH VERT OUT 2x2 - BLACK**  
Part No. 960049



High strength steel components to provide the strength and durability required to manage cabling requirements in the most demanding environments. For Cablofil Fiber Trough and V-Trough systems.

## Features & Benefits

Strong corrosion-resistant steel.

18 gage steel.

Tool-less, snap on design.

## Specifications

### General Info

Product Line	Cablofil	Finish	Custom Painted
UPC Number	800388242463	Country Of Origin	Italy

### Dimensions

Product Width US	2.0 in	Product Weight US	0.4 lb
Product Volume US	0.018 cu ft	Product Depth US	3.9 in
Product Height US	3.9 in		

### Buy American Act Compliance

BAA	Yes
-----	-----