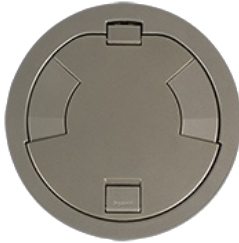




**Wiremold**  
**Discontinued - Evolution 8CT2 Series Flush Style Cover Assembly**  
Part No. 8CT2NK



Flush style die-cast aluminum cover assembly in powder-coated black finish. 8CT2 Series cover assemblies designed for use with 8STCP, 8STC, and 8STCPAV Poke-Thru Stem Assemblies. NOTE: Add suffix "TR" to the end of the part number to indicate tamper-resistant cover assembly.

## Features & Benefits

Die-cast aluminum cover assemblies: The new Evolution Series poke-thru design includes all metal die-cast aluminum cover assemblies, with two unique spring-loaded slide egress doors. No clumsy flip lids to get broken or cause an added trip hazard. Unique cover design: The cover opens a full 180 degrees with two unique spring-loaded slide egress doors to keep wires, connections and people safe. Flush style cover assemblies: A flush style cover for tile applications allows the Evolution Series Poke-Thru Devices to be adjusted to the same level as the top surface of the floor covering. The flush cover is designed to be used for tile or wood floors and in higher traffic applications, where a low profile is a must. Multiple finishes: Evolution Series Poke-Thru Devices are available in multiple finishes, (BK) black, (GY) gray, (NK) nickel, (BS) brass, (BZ) bronze, (AL) aluminum, (AA) brushed aluminum, (SB) satin brass, and (SN) satin nickel to seamlessly match your environment.

## Specifications

### General Info

Product Line	Wiremold	Replaced by Part Number	8CT2SN, 8CT2SN
UPC Number	786564089438	Country Of Origin	India
Construction	Unassembled	Application Sector	Commercial
Standard	cULus Listed Metallic Outlet Boxes: File E2961 Guide QCIT, cULus Listed Nonmetallic Outlet Boxes & Fittings Classified for Fire Resistance: File R8209 Guide CEYY Meets Article 300.21 300.22[C] & 314 of NEC	Type	Poke-Thru

### Listing Agencies / 3rd Party Agencies

cULus ListingNumber	E2961	cULus Listed	Yes
---------------------	-------	--------------	-----

---

## Additional Information

---

RoHS Conformant      Yes

---