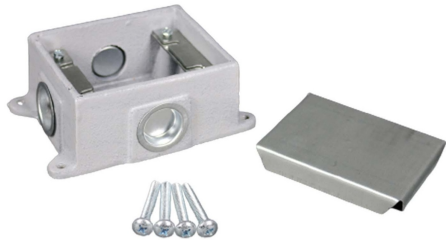




Wiremold  
880CM1-1 - Omnibox Series Shallow Cast-Iron Floor Box  
Part No. 880CM1-1



The 880CM1 Omnibox Floor Box Series provides an excellent activation solution for applications where single service is required in open space areas. The 880CM1 floor box is offered in a durable cast iron construction, designed to be installed in on-grade concrete floor applications and to meet a wide range of market requirements.

This floor box series has many applications, some of which are schools, financial institutions, and commercial office buildings.

## Features & Benefits

TopGuard protection. All cover assemblies for the Omnibox Floor Box Series have TopGuard protection. An integral design which keeps out water, dirt, and debris from the power and communication compartments.	Fully adjustable box. Before and after concrete pour adjustability. Lower installed cost.
Watertight cast-iron construction. Meets requirements for on grade or below grade application.	Two-gang configurations, maximum flexibility. Can remove divider for greater capacity. Supports multiservice applications.
Boxes and covers have been listed by Underwriters Laboratories Inc. to their standard UL514A, 514C, 514D, and Canadian standard C22.2	Flush activation assemblies for carpet and tile. Aesthetically pleasing assemblies are interchangeable for both cast-iron and stamped steel.
Datacom connectivity options. Accepts industry standard and proprietary devices from a wide range of manufacturers to provide a seamless and aesthetically pleasing interface for voice, data, audio, and video applications at the point-of-use. A wide selection of data and bezel options available for use with Ortronics TracJack and Series II devices.	This product meets the material restrictions of RoHS.

## Specifications

### General Info

Product Line	Wiremold	UPC Number	786564515906
Country Of Origin	United States	Construction	Assembled
Application Sector	Commercial	Standard	cULus Listed Metallic Outlet Boxes: File E2961 Guide QCIT. Meets Article 314.27(C) of NEC.
Type	Floor Box		

Dimensions

Product Width US	4.375 in	Product Depth US	2.438 in
Product Length US	5.375 in	Cubic Capacity	34 cu in

Listing Agencies / 3rd Party Agencies

cULus ListingNumber	E2961	cULus Listed	Yes
---------------------	-------	--------------	-----

Buy American Act Compliance

NAFTA	Yes
-------	-----

Additional Information

RoHS Conformant	Yes	Product Environmental Profile	Yes
-----------------	-----	-------------------------------	-----

Technical Information

Cable Entry	Through Floor
-------------	---------------