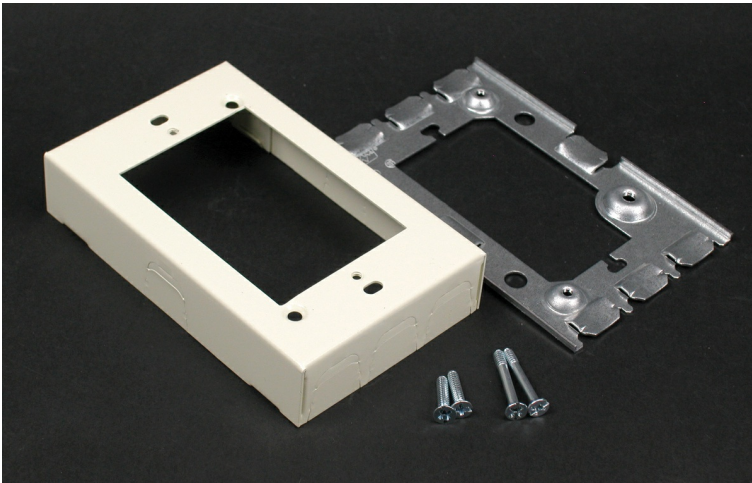




Wiremold
500/700 Single-Gang Flush Type Extension Adapter Fitting
Part No. 5751WH



For extensions from existing flush switch and receptacle boxes. Larger gang boxes available by special order. Single-gang: 4 5/8" L x 2 7/8" W (117mm x 73mm).

Features & Benefits

For extensions from existing flush switch and receptacle boxes. Larger gang boxes available by special order. Single-gang: 4 5/8" L x 2 7/8" W (117mm x 73mm).

Specifications

General Info

| | | | |
|-------------------|---|--------------------|------------------------|
| Product Line | Wiremold | UPC Number | 786776563023 |
| Country Of Origin | United States | Application Sector | Residential/Commercial |
| Standard | cULus Listed Raceway: File E4376 Guide RJBT. Fittings: File E4751 Guide RJPR. Meets Article 386 of NEC. Meets Section 12-1600 of CEC. | Type | Raceway |

Dimensions

| | | | |
|-------------------|----------|------------------|----------|
| Product Width US | 2.875 in | Product Depth US | 0.938 in |
| Product Length US | 4.625 in | | |

Listing Agencies / 3rd Party Agencies

| | | | |
|---------------------|--------|--------------|-----|
| cULus ListingNumber | E41751 | cULus Listed | Yes |
|---------------------|--------|--------------|-----|

Buy American Act Compliance

NAFTA Yes

Additional Information

RoHS Conformant Yes Product Environmental Profile Yes

Technical Information

Voltage 600.0 V
