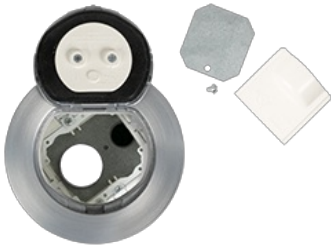




Wiremold
4IN UNWIRED FLUSH SYLE ASSEMBLY AA
 Part No. 4ATAA



Designed for retrofit and new construction, Evolution Series 4" Recessed Poke-Thru devices provide convenient access to power, communications, and audio/video services recessed below floor level - providing maximum device protection. With 2 Gangs of capacity, you will be able to configure services for the needs of your space. The low-profile metal covers are available in brushed aluminum, satin brass, satin nickel, and multiple powder-coated finishes designed to match any space. Evolution Series 4" Poke-Thru devices are the perfect fit for kiosks, training rooms, classrooms, healthcare facilities or commercial buildings with open-space architecture.

Features & Benefits

Prewired assembly: Save on labor with a completely assembled, prewired poke-thru with every power receptacle already installed.

Recessed devices: All power devices are recessed below floor level, providing maximum protection and device longevity.

Step-on-it installation: Quick and easy installation without the need for additional fasteners or a second installer.

Unique cover design: The cover opens a full 180 degrees with two unique spring-loaded slide egress doors to keep wires, connections and people safe

Multiple finishes: Evolution Series Poke-Thru Devices are available in multiple finishes, (BK) black, (GY) gray, (BZ) bronze, (AL) aluminum, (AA) brushed aluminum, (SB) satin brass, and (SN) satin nickel to seamlessly match your environment.

Surface style cover assemblies: A surface style cover is for mounting on top of the finished floor surface. The surface cover is designed to be used for carpet, tile, wood, polished concrete, or terrazzo.

3 hour fire rating: Evolution Series Poke-Thru Devices use an intumescent material that maintains the fire rating of any floor for up to 2 hours.

Meets ADA accessibility guidelines: Wide trim flange is designed to meet the ADA Accessibility Guidelines as it pertains to ADA Standard 4.5 which addresses changes in floor and ground surface levels. The poke-thru trim flanges are beveled so the slope is no greater than 1:2 ratio.

UL Listed and UL fire classified to U.S. and Canadian safety standards: UL Fire rated for up to 2-hour rated floors maintains the fire classification of the floor.

Specifications

General Info

Product Line	Wiremold	Color	Silver
UPC Number	786564104926	Country Of Origin	United States
Receptacle Type	Straight Blade	Number of Knockouts	10

Application Sector	Commercial	Standard	UL
--------------------	------------	----------	----

Type	Poke-Thru
------	-----------

Dimensions

Cubic Capacity	25 cu in	Core Hole Size	4 in
----------------	----------	----------------	------

Additional Information

Product Has Potential to Contribute to LEED	Yes
---	-----

Technical Information

Floor Type	Concrete	Is Tamper-Resistant	No
------------	----------	---------------------	----

Fire Rating	2 hr	Amperage	20 A
-------------	------	----------	------

Current Rating	20 A	NEMA Configuration Code	5-20R
----------------	------	-------------------------	-------

Voltage	125.0 V
---------	---------
