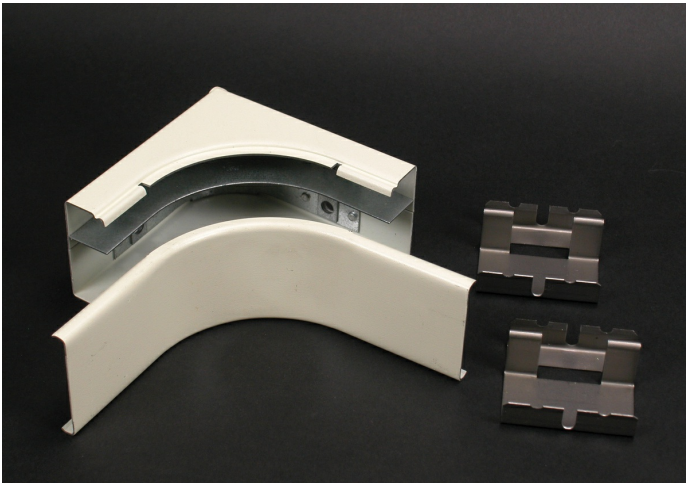




Wiremold
2400D Divided Radiused Internal Elbow Fitting
Part No. 2417DFO-FW



90 degree, divided internal corner elbow provides 2" (51mm) cable bend radius control for fiber optic and UTP/STP cable installations. Two couplings included.

Features & Benefits

90 degree, divided internal corner elbow provides 2" (51mm) cable bend radius control for fiber optic and UTP/STP cable installations. Two couplings included.

Specifications

General Info

Product Line	Wiremold	UPC Number	786776132359
Country Of Origin	United States	Application Sector	Residential/Commercial
Standard	cULus Listed Raceway: File E4376 Guide RJBT. Fittings: File E41751 Guide RJPR. Base & Blank Cover: Meets Article 386 of NEC. Meets Section 12-600 of CEC.	Type	Raceway

Listing Agencies / 3rd Party Agencies

cULus ListingNumber	E41751	cULus Listed	Yes
---------------------	--------	--------------	-----

Additional Information

RoHS Conformant	Yes	Product Environmental Profile	Yes
-----------------	-----	-------------------------------	-----

Technical Information

Voltage	600.0 V
---------	---------