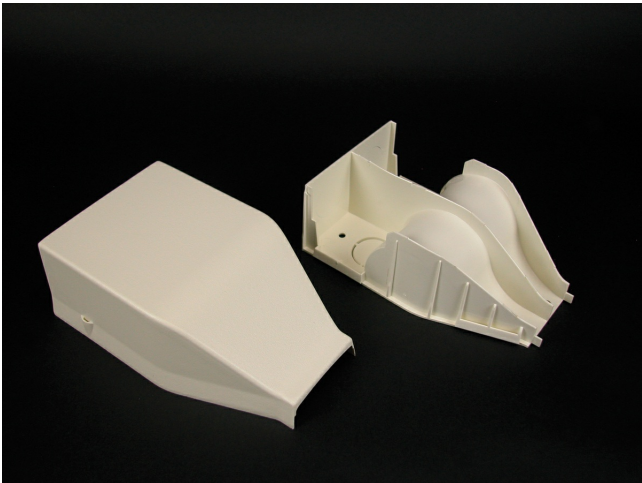




Wiremold
2300 Radiused Divided Entrance End Fitting
Part No. 2310DFO



Divided fitting to feed 2300 and 2300 Divided Series Raceway. Includes 1/2", 3/4", and 1" trade size KOs on back and top.

Features & Benefits

Divided fitting to feed 2300 and 2300 Divided Series Raceway. Includes 1/2", 3/4", and 1" trade size KOs on back and top.

Specifications

General Info

Product Line	Wiremold	UPC Number	786776548945
Country Of Origin	United States	Application Sector	Residential/Commercial
Standard	cULus Listed Raceway: File E90378 Guide RJTX. Complies with flammability requirements of UL-5A. Fittings: File E90377 Guide RJYT. Meets Article 388 of NEC. UL Listed for up to 600V. Meets Section 12-2600 of CEC.	Type	Raceway

Dimensions

Product Width US	4.0 in	Product Height US	2.2 in
Product Length US	6.5 in		

Listing Agencies / 3rd Party Agencies

cULus ListingNumber	E90377	cULus Listed	Yes
---------------------	--------	--------------	-----

Buy American Act Compliance

NAFTA	Yes
-------	-----

Additional Information

RoHS Conformant	Yes	Product Environmental Profile	Yes
-----------------	-----	-------------------------------	-----

Technical Information

Voltage	600.0 V
---------	---------
